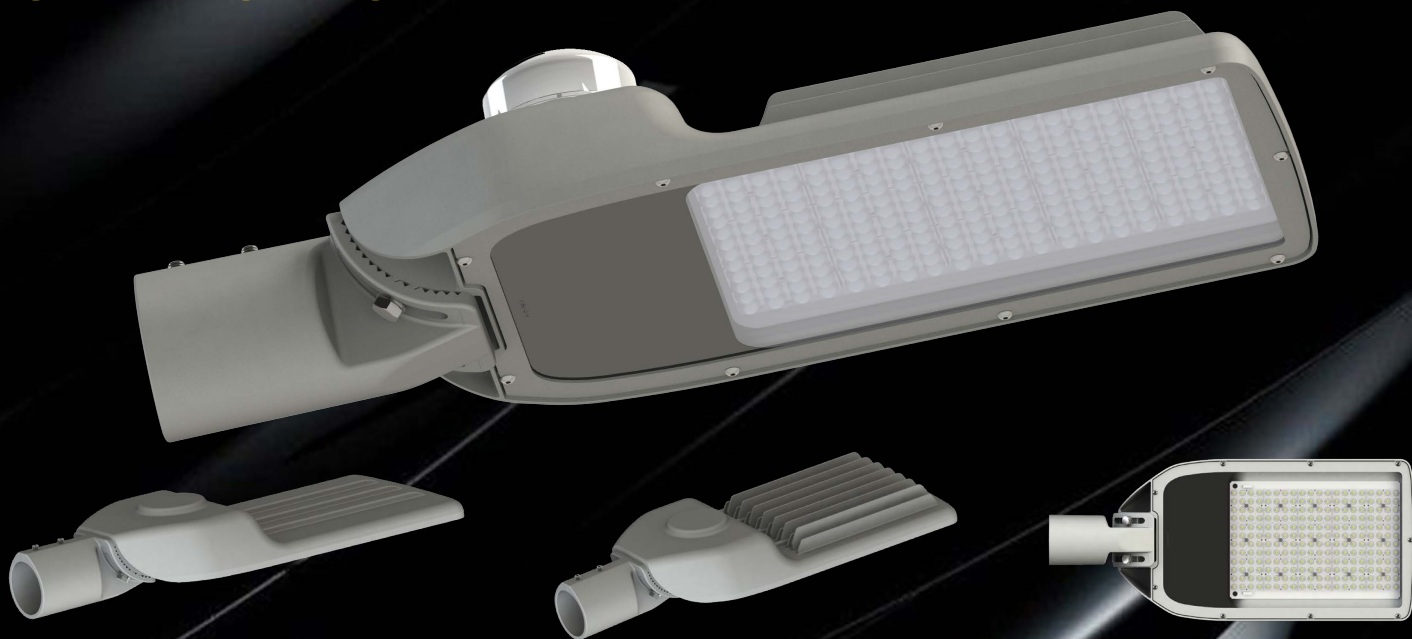


STREET LIGHTING LUMINAIRE

SL 110 CITY

HIGH EFFICIENCY

10-120W



Glass



LED number	140 LED	140 LED	140 LED	140 LED	240 LED	240 LED	240 LED
Power**	10W	14W	20W	26W	30W	40W	50W
Luminous flux*	1620 Lm	2270 Lm	3240 Lm	4200 Lm	5000 Lm	6570 Lm	8100 Lm
Light efficiency*	162 Lm/W	162 Lm/W	162 Lm/W	162 Lm/W	166 Lm/W	164 Lm/W	162 Lm/W
LED current	0.010A	0.015A	0.023A	0.030A	0.022A	0.028A	0.036A

*Data is for 4000K and 5000K. For 3000K contact manufacturer. **Power tolerance +/-5%

Glass



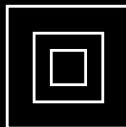
LED number	240 LED	240 LED	240 LED	240 LED	240 LED	240 LED	240 LED
Power*	60W	70W	80W	90W	100W	110W	120W
Luminous flux	9600 Lm	11060 Lm	12560 Lm	14035 Lm	15390 Lm	16700 Lm	18100 Lm
Light efficiency	160 Lm/W	158 Lm/W	157 Lm/W	156 Lm/W	154 Lm/W	152 Lm/W	151 Lm/W
LED current	0.042A	0.050A	0.056A	0.062A	0.070A	0.076A	0.082A

*Data is for 4000K and 5000K. For 3000K contact manufacturer. **Power tolerance +/-5%

TRIDONIC Philips Xitanium

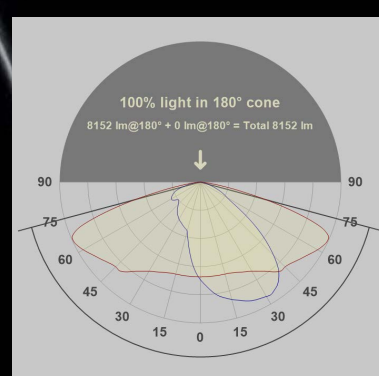
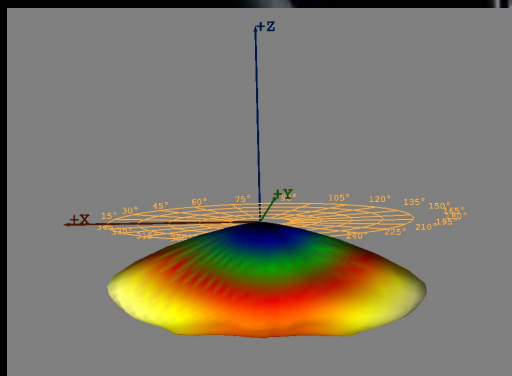
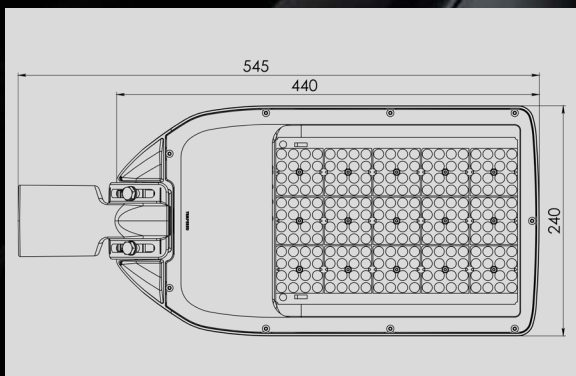


WWW.BSM-BG.COM



STREET LIGHTING LUMINAIRE

SL 110 CITY



LED brand	LUMILEDS LUXEON 3030 2D, 5050 (120 pcs)
Lenses / Optics	140 or 240 LED
Power supply voltage	AC 220-240V (on request 100-277V)
LED driver	TRIDONIC, PHILIPS, TCI, MEANWELL; On request: 1-10V, DALI, Self-dimming; NTC, CLO, NEMA; ZHAGA etc.
Operation temperature	-25°C + 50°C (-30°C or -40°C on request)
Isulation class	Class I or Class II
Beam Angle	street type 145°; 150° and others
Power factor	≥0.95
Operation Lifetime	≥ 60,000 h at L80B10 (100,000 h on request)
Surge protection	10kV
CR Index	CRI Ra≥70 (CRI Ra≥80 on request)
Colour temperature	4000K; 5000K (3000K on request) +/- 300K (Luminocity parameters may vary on request)

(The flux and efficiency may vary +/- 10%, depending on the LEDs)

Specifications are subject to change without notice, for latest datasheet refer to web-site

Body colour	RAL7035 standard - custom colour possible on request RAL9006, RAL7024
Body / Screen	Aluminium die casting (powder coated) / Tempered glass
IP / IK grade	IP66 / IK10
Weight	5,5kg
Dimensions	440x240x75mm
Mounting / Tilt angle	diam. 60mm top mount +20° - 0° / Boom +20° - 20°
Warranty	5 years (7 and 10 years on request)
Main standards references	ENEC, CE; EN 55015; EN 61000; EN 61547; EN 62031 EN 60598; EN 62262; EN 13201; EN 62471



Philips Xitanium

